

## SUMTER COUNTY COMMUTING PATTERNS

### Large Majority of County's Jobs Held by Residents

Based on U.S. Census Bureau data, Sumter County's workforce decreased by 2,479 workers between 1990 and 2000. During this same time frame the Census reports the county had a cumulative loss of 2,783 of in-county jobs. Neither of these decreases appreciably changed Sumter resident workers' preference to work close to home. The percentage of Sumter County residents working in their home county is much greater than the South Carolina norm. Eighty-four percent (84%) of Sumter's resident workers are employed in the county, while in South Carolina the average of those who reside and work in the same county is seventy-two percent (72%).

Over 2,500 of the nearly 7,000 Sumter workers who work outside the county are employed in the Columbia Metropolitan Area (Richland and Lexington Counties). The other major work destination for Sumter residents is Clarendon County which by the year 2000 employed 1,238, an increase of 56% since 1990.

A comparison of Sumter County commuting patterns between 1990 and 2000 shows how this factor has affected Sumter's workforce.

	1990	2000	Nr. Change	% Change
Total Sumter Co. Workforce	46,804	44,325	-2,479	-5.3%
Live/Work in Sumter Co.	40,967	37,339	-2,418	-5.9%
Work Outside Sumter Co.	5,837	6,986	1,149	19.7%
Commute to Sumter Co. for Work	5,472	6,682	1,210	22.1%

Source: U.S. Census Bureau

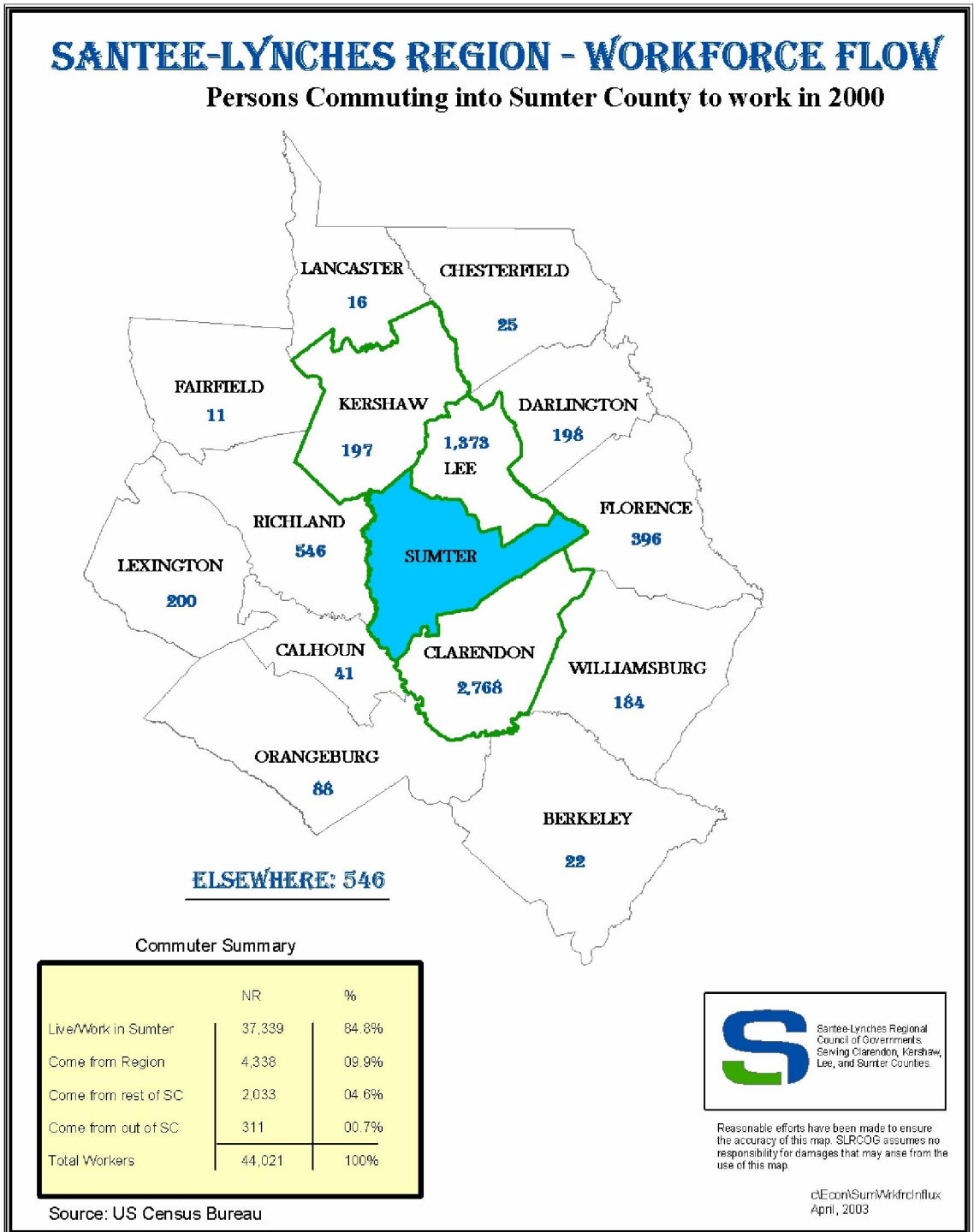
While over 1,000 more Sumter workers crossed the county line for work in the year 2000, mean one-way travel time to work was still low by South Carolina standards. Sumter's 21.5 minute mean one-way travel time to work in 2000 was still less than the Region's other three counties mean travel time in 1990. The large number of workers who both live and work in Sumter results in only about 22% of the county's workforce spending 30 or more minutes commuting to work.

The number of workers who commute to Sumter for employment from other counties continues to increase. The bulk of the commuters in-migrating to Sumter for work are from the Region's two more rural counties (Clarendon and Lee). The latest census shows that 2,768 workers from Clarendon and 1,373 workers from Lee commute to Sumter for jobs. These 4,141 workers reflect an increase of 32% over the number of workers from these two counties in 1990.

Since Sumter County has a total of 44,325 resident workers and 44,021 in county jobs, the county is a net exporter of 304 workers to employers outside the county.

Attached maps depict the workforce flow to and from Sumter for the year 2000.

# SANTEE-LYNCHES EMPLOYMENT SERIES



# SANTEE-LYNCHES EMPLOYMENT SERIES

